

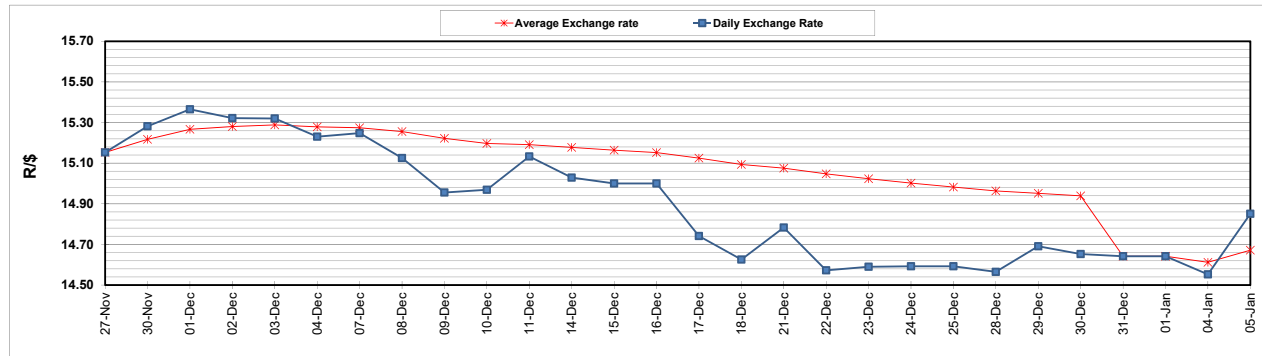
	PETROL 95 ULP	PETROL 93 ULP & LRP	DIESEL 0.05%	DIESEL 0.005%	ILL. PAR.
GAUTENG PUMP PRICE (SA c/l) AS FROM 06/01/2021	1,486.000	1,469.000	-	-	-
WHOLESALE PRICE (SA c/l) AS FROM 06/01/2021	-	-	1,300.420	1,301.820	739.688
SINGLE NATIONAL MAXIMUM RETAIL PRICE	-	-	-	-	930.000
BASIC FUEL PRICE - 05/01/2021 (SA c/l)	554.462	546.349	557.690	559.785	544.715
PRESS RELEASE CONTRIBUTION TO BFP 31/12/2020 - 05/01/2021 (SA c/l)	479.170	469.170	486.630	489.030	472.128
UNIT OVER/(UNDER) RECOVERY - 05/01/2021 (SA c/l)	(75.292)	(77.179)	(71.060)	(70.755)	(72.587)
AVERAGE BASIC FUEL PRICE 31/12/2020 - 05/01/2021	545.164	538.956	550.964	553.167	537.534
AVERAGE UNIT OVER/(UNDER) RECOVERY 31/12/2020 - 05/01/2021	(65.994)	(69.786)	(64.334)	(64.137)	(65.406)

ANALYSIS MOVEMENT OF AVERAGE OVER/(UNDER) RECOVERY

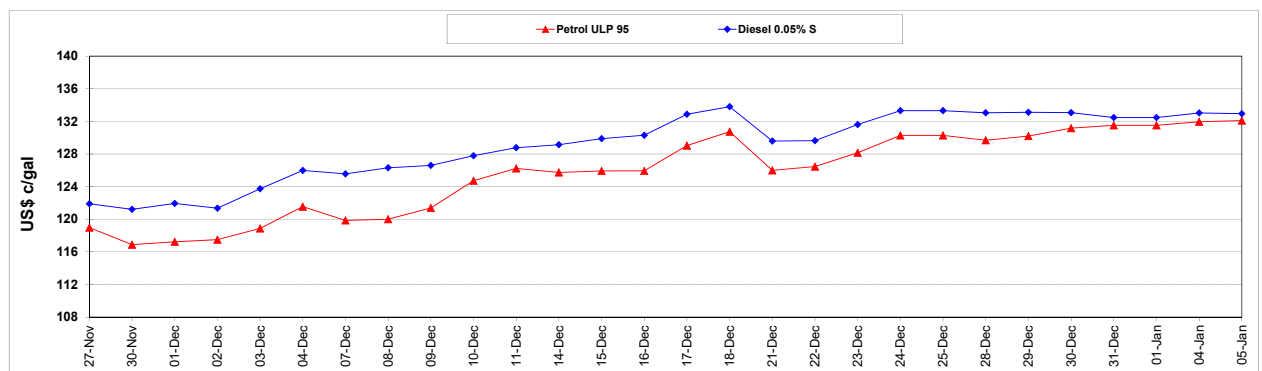
	PETROL 95	PETROL 93	DIESEL 0.05%	DIESEL 0.005%	ILL. PAR.
- MOVEMENT IN INTERNATIONAL PRODUCT PRICES	(75.930)	(79.609)	(74.376)	(74.219)	(75.203)
- MOVEMENT IN EXCHANGE RATE	9.936	9.823	10.042	10.082	9.797
AVERAGE UNIT OVER/(UNDER) RECOVERY 31/12/2020 - 05/01/2021	(65.994)	(69.786)	(64.334)	(64.137)	(65.406)

R/\$ EXCHANGE RATE - (R/\$14.8508 - 05/01/2021)

EXCHANGE RATE USED IN BASIC FUEL PRICE



INTERNATIONAL PRODUCT PRICES OF BASKET USED IN BASIC FUEL PRICE



BASIC FUEL PRICE IN SA CENTS PER LITRE

